

# ANIMAL HUSBANDRY BROCHURE

EFFECTIVE FROM OCTOBER 2021



[leaderproducts.com.au](http://leaderproducts.com.au)

Leaders in the field  
since 1948

# CONTENTS

LEADER STORY	3
CASTRATION & INDUSTRIAL RINGS SUPPLIES	4 - 7
MARKING & IDENTIFICATION	8 - 14
STOCK PRODDER & STOCK MOVEMENT SUPPLIES	15 - 19
DEHORNING EQUIPMENT	20 - 24
BIRTHING & WEANING PRODUCTS	25 - 28
DRENCHING	29
SAFETY & GENERAL CARE	30 - 31
VACCINATION	32 - 33
SURGICAL EQUIPMENT	34
CATTLE PRODUCTS	35
SHEEP SUPPLIES	36 - 39
WOOL HANDLING PRODUCTS	40 - 52
COMPANION ANIMALS	53 - 55
WATERING PRODUCTS	56 - 58
NOTES	59

## FREIGHT & ORDER CONDITIONS

All freight (unless stated below) is Ex-Leader Products Warehouse.

### **Animal Husbandry Orders**

- Freight Free for orders over \$200.00.
- Orders under \$200.00 freight will be charge per weight.

### **Products listed with “Plus Freight”**

- Freight charged per weight.

### **Urgent Orders**

- Processing Fee of \$25.00.

Minimum Quantities apply to individual stock codes, see price list for further details.

# LEADER STORY

Leader Products Pty Ltd is a wholly Australian-owned company which has been specialising in the manufacture and distribution of livestock identification equipment since 1948.

In addition to their patented identification tags and applicators, Leader Products is also a wholesale distributor of an extensive range of animal husbandry supplies & equipment.

## Market Leaders through Continuous Product Testing & Development

From the early beginnings with the patented “Leadertag” (plastic ear tags designed for the identification and tracking of sheep), Leader Products has continued to develop and enhance the quality of their products, resulting in the long-term establishment of the company as a prominent supplier within the agricultural industry.

Through the continuous development and improvement of their products’ quality, Leader Products has become an approved supplier of livestock identification devices for the National Livestock Identification Scheme (NLIS) in Australia and the National Animal Identification & Tracing (NAIT) scheme in New Zealand.

Leader Products has also supplied and fulfilled Government contracts nationally and internationally. The company is ISO 9001 certified in Australia and New Zealand.

## Better Tags for Workers’ Safety and Healthier Livestock

Over time, Leader Products has expanded its range to include a variety of tags to suit most species of animals throughout the world. Continuous advancements in material technologies, laser marking capabilities and applicator design enable Leader Products to make improvements to their products, especially in areas such as tag retention and the reduction of material breakdown.

As a result, Leader Products’ identification tags now possess increased strength, flexibility and UV stability, which has improved the tags’ colour permanence and overall wear in tough environmental conditions.

Tag applicators have also continued to be redesigned to make tag application safer and more efficient for the users applying the tags, which in turn helps to reduce the risk of infection, stress and impact on the animal being tagged, from an animal health and welfare perspective.

## Australian-Owned, Represented Internationally

Leader Products’ Head Office is located in Melbourne, Victoria, and through a network of secondary tag and order processing sites located in Western Australia and Queensland, as well as its New Zealand subsidiary, the company is able to supply its range of market-leading products Australia-wide and throughout the world.

The extensive range of products are distributed globally by Queclink Wireless Solutions Co. Ltd. outside of Australia and New Zealand.



# CASTRATION & INDUSTRIAL RINGS SUPPLIES

## CASTRATION & INDUSTRIAL RINGS



### INDUSTRIAL RINGS STD CODE B 5000 PACK

IR CODE B

These latex-rubber industrial rings are used for the sealing of runners on viscera table, cattle and deer oesophagus, as well as packaging and the sealing of bags.

**Dimensions:** 8 mm Inside Dia.

**Weight:** 2.85 kg

**Note:** 5,000 pcs per inner carton, 30,000 pcs per outer carton.



### INDUSTRIAL RINGS LRG CODE C 2500 PACK

IR CODE C

These latex-rubber industrial rings are used for the sealing of bung of young cattle and deer.

**Dimensions:** 12 mm Inside Dia.

**Weight:** 1.92 kg

**Note:** 2,500 pcs per inner carton, 15,000 pcs per outer carton.



### INDUSTRIAL RINGS LRG CODE D 2000 PACK

IR CODE D

These latex-rubber industrial rings are used for the sealing of bung of older cattle and deer, as well as use on new auto machines.

**Dimensions:** 15 mm Inside Dia.

**Weight:** 2.15 kg

**Note:** 2,000 pcs per inner carton, 12,000 pcs per outer carton.

# CASTRATION & INDUSTRIAL RINGS SUPPLIES

## CASTRATION & INDUSTRIAL RINGS



### MARKING RINGS 100 PACK

**MR100**

These pure latex standard marking rings contain no fillings to ensure positive, germ-free marking and are used for the castration of lambs and calves.

When used for the castration of animals, please consult with your local veterinary practice before use.

Applied using the Applicator Marking Rings Metal or Applicator Marking Rings Plastic.

**Weight:** 70.00 grams

**Note:** Pack of 100



### MARKING RINGS 500 PACK

**MR500**

These pure latex standard marking rings contain no fillings to ensure positive, germ-free marking and are used for the castration of lambs and calves.

When used for the castration of animals, please consult with your local veterinary practice before use.

Applied using the Applicator Marking Rings Metal or Applicator Marking Rings Plastic.

**Weight:** 395.00 grams

**Note:** Packs of 500 pcs, 12,000 pcs (24 packs) per outer carton.



### MARKING RINGS 2000 PACK

**MR2000**

These pure latex standard marking rings contain no fillings to ensure positive, germ-free marking and are used for the castration of lambs and calves.

When used for the castration of animals, please consult with your local veterinary practice before use.

Applied using the Applicator Marking Rings Metal or Applicator Marking Rings Plastic.

**Weight:** 1330.00 grams

**Note:** Pack of 2,000 pcs, 24,000 pcs (12 packs) per outer carton.

# CASTRATION & INDUSTRIAL RINGS SUPPLIES

## CASTRATION & INDUSTRIAL RINGS



### MARKING RINGS 5000 PACK

**MR5000**

These pure latex standard marking rings contain no fillings to ensure positive, germ-free marking and are used for the castration of lambs and calves.

When used for the castration of animals, please consult with your local veterinary practice before use.

Applied using the Applicator Marking Rings Metal or Applicator Marking Rings Plastic.

**Weight:** 2965.00 grams

**Note:** Packs of 5,000 pcs, 20,000 pcs (4 packs) per outer carton.



### MARKING RINGS JUMBO 25 PACK

**MRJ25**

These pure latex jumbo marking rings are used to castrate bulls from 120kg to 340kg. With a square-shaped edge, the rings open in a triangular shape to 100mm x 75mm x 75mm.

When used for the castration of animals, please consult with your local veterinary practice before use.

Applied using the Applicator Jumbo Ring Expander.

**Weight:** 70.00 grams

**Note:** Pack of 25



### MARKING RINGS JUMBO 125 PACK

**MRJ125**

These pure latex jumbo marking rings are used to castrate bulls from 120kg to 340kg. With a square-shaped edge, the rings open in a triangular shape to 100mm x 75mm x 75mm.

When used for the castration of animals, please consult with your local veterinary practice before use.

Applied using the Applicator Jumbo Ring Expander.

**Weight:** 330.00 grams

**Note:** Pack of 125

# CASTRATION & INDUSTRIAL RINGS SUPPLIES

## CASTRATION APPLICATORS



### APPLICATOR MARKING RING METAL

**MRAM**

Designed for one handed operation, the Applicator Marking Ring Metal is superbly engineered with non-slip prongs.

**Applicable Rings:** MR100, MR500, MR2000  
**Weight:** 245.00 grams



### APPLICATOR MARKING RING PLASTIC

**MRAP**

Designed for one handed operation, the Applicator Marking Ring Plastic is superbly engineered with non-slip prongs.

**Applicable Rings:** MR100, MR500, MR2000  
**Weight:** 160.00 grams



### APPLICATOR JUMBO RING EXPANDER

**APPMRJ**

The Applicator Jumbo Ring Expander is suitable for use with Jumbo Marking Rings and is ideal for castrating calves over 6 months old.

**Applicable Rings:** Jumbo Rings MRJ25, MRJ125  
**Weight:** 730.00 grams



# MARKING & IDENTIFICATION

## EARMARKING

### EARMARKING PLIER SINGLE SHEEP 11/A

EM1000

Heavy duty ear-marking plier for use on sheep, choose from over 100 designs and specify design code when ordering.

**Weight:** 600.00 grams

**Note:** Made to order

### EARMARKING PLIER COMBINATION SHEEP

EM1003

Heavy duty ear-marking plier for use on sheep, choose from over 100 designs and specify design code when ordering.

**Weight:** 500.00 grams

**Note:** Made to order

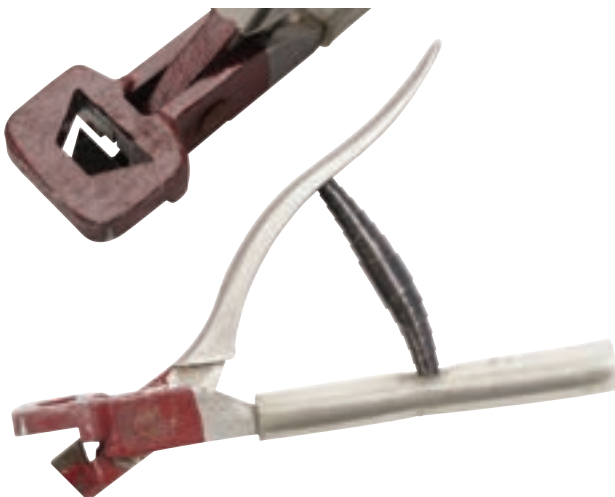
### EARMARKING PLIER SINGLE CATTLE 11/A

EM1005

Heavy duty ear-marking plier for use on cattle, choose from over 100 designs and specify design code when ordering.

**Weight:** 800.00 grams

**Note:** Made to order





# MARKING & IDENTIFICATION

## EARMARKING



### EARMARKING PLIER COMBINATION CATTLE

**EM1006**

Heavy duty earmarking plier for use on cattle, choose from over 100 designs and specify design code when ordering.

**Weight:** 800.00 grams

**Note:** Made to order



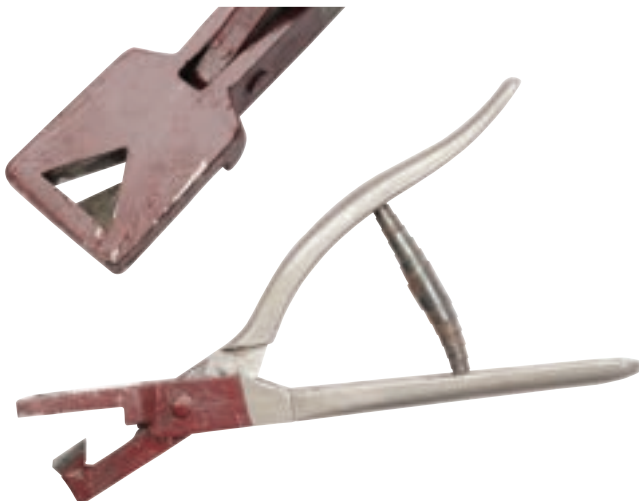
### EARNOTCHING PLIER SINGLE SHEEP 11/B

**EM1008**

Heavy duty earningotchers for use on sheep, choose from 18 available designs and specify design code when ordering.

**Weight:** 600.00 grams

**Note:** Made to order



### EARNOTCHING HGP PLIER

**EM1014**

Earningotching Pliers for use on cattle that have been administered hormone growth promotants (HGP).

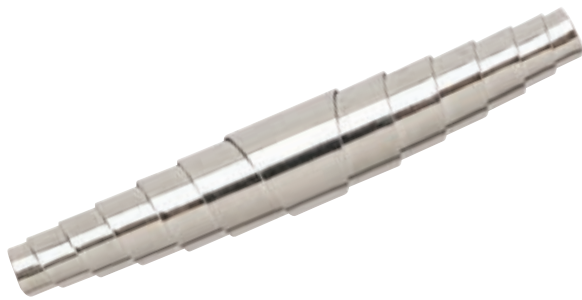
This product cannot be sharpened.

**Weight:** 690.00 grams

**Note:** Made to order

# MARKING & IDENTIFICATION

## EARMARKING



### EARMARKING PLIERS REPLACEMENT SPRING

**EM1015**

Replacement spring for earmarking pliers.

**Weight:** 10.00 grams

## MARKING SPRAY CRAYONS & PAINT

### RADDLES



#### RADDLES DRY WHITE

**RAD1000**

#### RADDLES DRY RED

**RAD1001**

#### RADDLES DRY BLUE

**RAD1002**

Dry Raddle is a chalk-based marker, used on livestock. It is a safe and easy-to-use marker and meets all requirements for wool growers around Australia.

Available in white, red and blue.

**Weight:** 220.00 grams

**Note:** Minimum Order 10

### STOCKMARK CRAYON



#### STOCKMARK CRAYON GREEN

**SMARK1001**

#### STOCKMARK CRAYON BLUE

**SMARK1002**

#### STOCKMARK CRAYON RED

**SMARK1004**

This all-weather Stockmark crayon is easy to use and suitable for use on all livestock. Its simple twist-action enables clean and easy application.

Available in green, blue, red.

**Weight:** 60.00 grams

**Note:** Minimum Order 10

# MARKING & IDENTIFICATION

## MARKING SPRAY CRAYONS & PAINT



### STOCKMARKER SPRAY

<b>STOCKMARKER SPRAY</b> RED 325G	<b>SSPRAY1000</b>
<b>STOCKMARKER SPRAY</b> BLUE 325G	<b>SSPRAY1001</b>
<b>STOCKMARKER SPRAY</b> GREEN 325G	<b>SSPRAY1002</b>
<b>STOCKMARKER SPRAY</b> ORANGE 325G	<b>SSPRAY1003</b>
<b>STOCKMARKER SPRAY</b> PURPLE 325G	<b>SSPRAY1004</b>
<b>STOCKMARKER SPRAY</b> PINK 350G	<b>SMARK1010</b>

Best used on sheep and goats, this fully scourable stockmarker spray offers a clean and easy way to mark stock with confidence and reliability with ozone friendly colour aerosol. The spray ensures clear marking of the fleeces and long-lasting colours, and comes in fully emptying cans.

Available in red, blue, green, orange, purple and pink.

**Weight:** SSPRAY1000 to 1004 - 440.00 grams

**Weight:** SMARK1010 - 500.00 grams

**Note:** Plus Freight



### TAIL PAINT AEROSOL

<b>TAIL PAINT AEROSOL</b> RED 335G	<b>TP1010</b>
<b>TAIL PAINT AEROSOL</b> BLUE 335G	<b>TP1011</b>
<b>TAIL PAINT AEROSOL</b> GREEN 335G	<b>TP1012</b>
<b>TAIL PAINT AEROSOL</b> YELLOW 335G	<b>TP1013</b>
<b>TAIL PAINT AEROSOL</b> ORANGE 335G	<b>TP1014</b>
<b>TAIL PAINT AEROSOL</b> FLURO PINK 335G	<b>TP1015</b>

This is a non-irritating and weather resistant cattle marker with a bright range of colours, providing easy to see markings on beef and dairy cattle.

Available in red, blue, green, yellow, orange and fluorescent pink.

**Weight:** 445.00 grams

**Note:** Plus Freight



# MARKING & IDENTIFICATION

## TATTOOING



### TATTOO INK BLACK 5L

TI1008

This black tattoo ink produces crisp, permanent tattoo marks on livestock.

**Weight:** 5.25 kg

**Note:** Plus Freight



### TATTOO PASTE BLACK 700G

TPA1001

This black tattoo paste produces crisp, permanent tattoo marks and is best used on pigs with light-coloured skin.

Available in 700 gram container.

**Weight:** 800.00 grams



### PIG BODY STRIKER 3 DIVISION

TM1014

This device enables an easy and effective tattooing of pigs. The head has 3 slots for the placement of letters and numbers to suit. 3 Division is used in Tasmania and South Australia.

**Weight:** 265.00 grams

**Note:** Digits and letters are not included

# MARKING & IDENTIFICATION

## TATTOOING

### PIG BODY STRIKER 4 DIVISION

TM1015

This device enables an easy and effective tattooing of pigs. The head has 4 slots for the placement of letters and numbers to suit. 4 Division is used in Queensland.

**Weight:** 420.00 grams

**Note:** Digits and letters are not included



### PIG BODY STRIKER 5 DIVISION W DIGITS

TM1019

This device enables an easy and effective tattooing of pigs. The head has 5 slots for the placement of letters and numbers to suit. 5 Division is used in Western Australia.

**Weight:** 720.00 grams

**Note:** Digits and letters are included



### PIG BODY STRIKER 6 DIVISION

TM1016

This device enables an easy and effective tattooing of pigs. The head has 6 slots for the placement of letters and numbers to suit.

**Weight:** 720.00 grams

**Note:** Digits and letters are included



# MARKING & IDENTIFICATION

## TATTOOING



### PIG BODY STRIKER SINGLE LETTERS

TM1018

Single letters for placement in the Pig Body Striker.

**Weight:** 15.00 grams



### PIG BODY STRIKER SINGLE NUMERALS

TM1017

Single numbers for placement in the Pig Body Striker.

**Weight:** 15.00 grams



# STOCK PRODDERS & STOCK MOVEMENT SUPPLIES



## LEADER MINI PRODDER

**PROD1001**

This small, handheld prodder is for use with livestock at close range.

**Weight:** 330.00 grams



## BLUE HEELER PRODDERS

**BLUE HEELER PRODDER W  
250MM SHAFT**

**BHP1001**

**BLUE HEELER PRODDER W  
610MM SHAFT**

**BHP1003**

**BLUE HEELER PRODDER W  
810MM SHAFT**

**BHP1002**

Designed for use in rugged conditions, this stock prodder comes complete with Shaft handle and is supplied with a wrist strap and button lock.

The device encourages animal movement (particularly cattle), by generating a relatively high-voltage, low-current electric shock.

Includes 4 x C size batteries and comes with a 12 months warranty with normal use.

Available in 250mm, 610mm and 810mm shaft lengths.

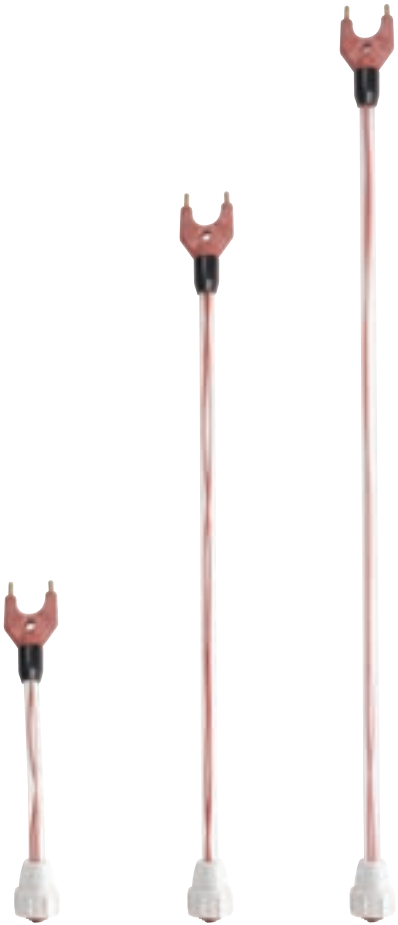
**WARNING:** Do not beat animal with this product or use for prolonged period on any single animal. Illegal for use on humans.

**Weight:** BHP1001 - 690.00 grams

**Weight:** BHP1003 - 740.00 grams

**Weight:** BHP1002 - 760.00 grams

# STOCK PRODDERS & STOCK MOVEMENT SUPPLIES



## BLUE HEELER FLEXIBLE SHAFTS

**BLUE HEELER**  
250MM FLEXIBLE SHAFT

**BHP1004**

**BLUE HEELER**  
610MM FLEXIBLE SHAFT

**BHP1005**

**BLUE HEELER**  
810MM FLEXIBLE SHAFT

**BHP1000**

Replacement Blue Heeler Flexible Shafts - for use with Blue Heeler Stock Prodder.

Available in 250mm, 610mm and 810mm shaft lengths.

**Weight:** BHP1004 - 90.00 grams

**Weight:** BHP1005 - 140.00 grams

**Weight:** BHP1000 - 155.00 grams



## BLUE HEELER END CAP

**BHP1006**

This is a replacement battery cover plate for the handle of the Blue Heeler Stock Prodder.

**Weight:** 20.00 grams



# STOCK PRODDERS & STOCK MOVEMENT SUPPLIES



## RED HEELER PRODDER

<b>RED HEELER PRODDER W</b> 300MM SHAFT	<b>RHP1009B</b>
<b>RED HEELER PRODDER W</b> 560MM SHAFT	<b>RHP1000B</b>
<b>RED HEELER PRODDER W</b> 810MM SHAFT	<b>RHP1005B</b>

Designed for use in rugged conditions, this stock prodder comes complete with shaft, handle and is supplied with a wrist strap.

The device encourages animal movement (particularly cattle), by generating a relatively high-voltage, low-current electric shock.

Includes shaft, rechargeable battery, 240v and 12v chargers, and comes with a 12 months warranty with normal use.

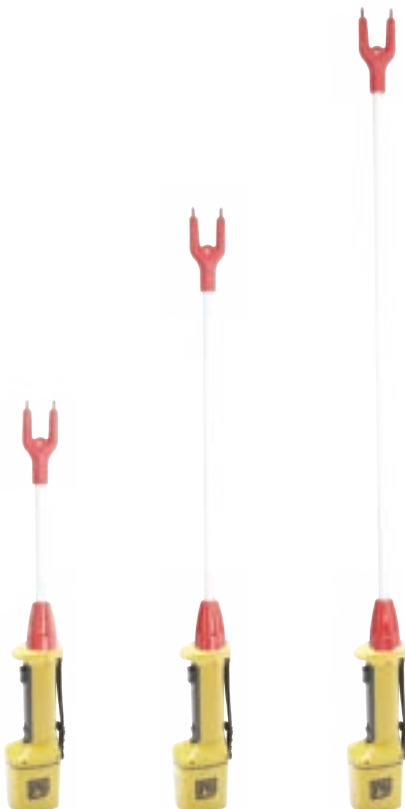
Available in 300mm, 560mm and 810mm shaft lengths.

**WARNING:** Do not beat animal with this product or use for prolonged period on any single animal. Illegal for use on humans.

**Weight:** RHP1009B - 1.05 kg

**Weight:** RHP1000B - 1.09 kg

**Weight:** RHP1005B - 1.11 kg



## YELLOW HEELER PRODDERS

<b>YELLOW HEELER PRODDER W</b> 300MM SHAFT	<b>PROD1002B</b>
<b>YELLOW HEELER PRODDER W</b> 560MM SHAFT	<b>PROD1003B</b>
<b>YELLOW HEELER PRODDER W</b> 810MM SHAFT	<b>PROD1000B</b>

Designed for use in rugged conditions, this stock prodder comes complete with shaft, handle and is supplied with a wrist strap.

The device encourages animal movement (particularly cattle), by generating a relatively high-voltage, low-current electric shock.

Includes 4 x C size batteries and comes with a 12 months warranty with normal use.

Available in 300mm, 560mm and 810mm shaft lengths.

**WARNING:** Do not beat animal with this product or use for prolonged period on any single animal. Illegal for use on humans.

**Weight:** PROD1002B - 900.00 grams

**Weight:** PROD1003B - 910.00 grams

**Weight:** PROD1000B - 945.00 grams



# STOCK PRODDERS & STOCK MOVEMENT SUPPLIES



## HEELER FLEXIBLE SHAFTS

**HEELER 300MM FLEXIBLE SHAFT**  
(RED,YELLOW)

**RHP1001**

**HEELER 560MM FLEXIBLE SHAFT**  
(RED,YELLOW)

**RHP1002**

**HEELER 810MM FLEXIBLE SHAFT**  
(RED,YELLOW)

**RHP1006**

Flexible Heeler shafts to suit Red and Yellow Heeler Stock Prodders are available in 300mm, 560mm and 810mm shaft lengths.

**Weight:** RHP1001 - 115.00 grams

**Weight:** RHP1002 - 120.00 grams

**Weight:** RHP1006 - 160.00 grams



## RED HEELER 12V RECHARGER

**RHP1003**

This is a 12 volt car/cigarette lighter recharger to suit Red Heeler Prodders.

**Weight:** 95.00 grams



## RED HEELER 240V RECHARGER

**RHP1004**

This is a 240 volt wall-mounted recharger to suit Red Heeler Prodders.

**Weight:** 120.00 grams

# STOCK PRODDERS & STOCK MOVEMENT SUPPLIES



## RED HEELER BATTERY PACK

RHP1007

This is a replacement battery pack to suit Red Heeler Prodders.

**Weight:** 400.00 grams

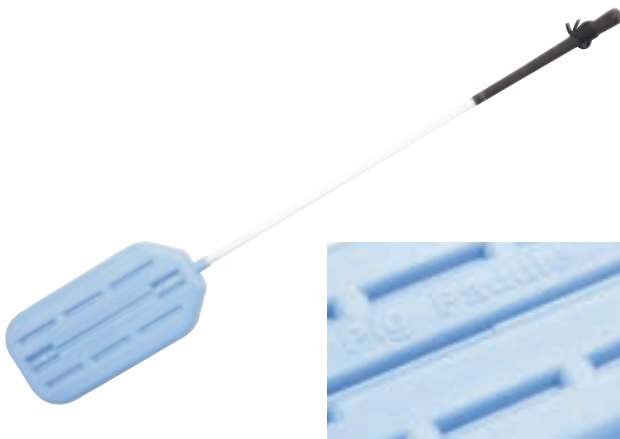


## RED HEELER BODY HANDLE ONLY

RHP1008

This is a replacement handle (handle only - excludes battery) to suit the Red Heeler Prodder.

**Weight:** 300.00 grams



## PIG PADDLE

SP1000

This product is designed to move livestock in a humane way. The ball bearings in the paddle rattle when moved, encouraging the animals to move as desired.

Available in blue.

**Dimensions:** 1.70 (l) m

**Weight:** 475.00 grams

**Note:** Plus Freight

**Note:** This product is not designed for the use of striking animals.

## STOCK CANE WOODEN

SC1000

This product is made from natural wood/bamboo and is designed to move livestock in a humane way.

**Dimensions:** 1.20 (l) m

**Weight:** 180.00 grams

**Note:** Plus Freight

**Note:** This product is not designed for the use of striking animals.

# DEHORNING EQUIPMENT



## DEHORNER BARNES SMALL

**DH1000**

This dehorner is designed to remove horns of calves from 2-10 months of age and can remove a ring of skin around the horn to prevent a stub from growing out. The handles and cutting blades are made of high grade tool steel.

The tool's opening is 35mm, overall length 320mm and comes with rubber grips on handles for added user comfort.

**Weight:** 630.00 grams



## DEHORNER BARNES LARGE

**DH1001**

This heavily-constructed dehorner is designed to handle larger horns of calves over 10 months of age. The cutting blades are made from high grade tool steel, while the handles made with heavy tube steel for added tensile strength against larger horns.

The tool's opening is 45mm, overall length 420mm and comes with rubber grips for added user comfort.

**Weight:** 880.00 grams



## DEHORNER WIDEMOUTH

**DH1002**

The widemouth dehorner can be used on calves up to 15 months of age. The tool's handles and cutting blades are made of high grade tool steel, the handles have a rubber grip. The dehorner can also remove a ring of skin around the horn to prevent a stub from growing out.

**Weight:** 1.19 kg

# STOCK PRODDERS & STOCK MOVEMENT SUPPLIES



## DEHORNER HODGE

DH1012

This large dehorner is ideal for dehorning calves up to 18 months old. The tool's polished plated frame is made from 40 tonne tensile strength metal, with the best quality hardened and tempered steel blades and polished wooden handles. The blades are cupped to provide a scooping action.

The tool's opening between blades is 50mm (2"), overall length is 495mm.

**Weight:** 2.80 kg

## DEHORNER HODGE HANDLES (2)

DH1014

Wooden handles to suit the Hodge dehorner.

**Weight:** 415.00 grams



## DEHORNER HODGE SET OF BLADES

DH1021

Replacement blades to suit the Hodge dehorner.

**Weight:** 310.00 grams



# DEHORNING EQUIPMENT

## DEHORNER KEYSTONE IMPROVED

**DH1016**

The Original Improved Keystone Dehorner is especially designed to provide the greatest power where it is most needed: at the beginning of the cutting stroke.

As the cutting stroke is started, the blade closes slowly but powerfully, aided by the use of extra long handles.

The overall length including handles is 1.16m. The 80mm maximum blade opening enables dehorning of even the largest beast.

Replacement blades (DH1022- as a set) and handles (DH1019) are available.

**Weight:** 8.37 kg

## DEHORNER KEYSTONE IMPROVED BLADES (SET)

**DH1022**

Replacement blades to suit the Improved Keystone dehorner.

**Weight:** 570.00 grams

## DEHORNER KEYSTONE JUNIOR BLADE

**DH1023**

Replacement blade to suit the Junior Keystone dehorner.

**Weight:** 180.00 grams





# DEHORNING EQUIPMENT



## DEHORNER KEYSTONE JUNIOR HANDLES (2)

**DH1020**

Replacement handles to suit the Junior Keystone dehorner. Sold as a pair.

**Weight:** 530.00 grams



## DEHORNER KEYSTONE LARGE BLADE

**DH1025**

Replacement blade to suit the Large Keystone dehorner.

**Weight:** 360.00 grams



## DEHORNER KEYSTONE LARGE HANDLE (1)

**DH1019**

Replacement handle to suit the Large Keystone dehorner.

**Weight:** 775.00 grams



## DEHORNER LEADER TIPPING

**DH1008**

This dehorner, with best-quality, hardened and tempered steel blades and spring steel handles, is used to remove the insensitive, sharp end of the horn on older animals.

**Weight:** 2.90 kg

# DEHORNING EQUIPMENT



## DEHORNING WIRE AND HANDLES

**DH1009**

The Dehorning Wire is a length of stainless steel saw wire used to remove mature horns from adult cattle, rams and goats. The wire cuts through the horns quickly and without any slippage. Use with the handles supplied.

**Wire length:** 12m, includes handles.

**Weight:** 320.00 grams



## DEHORNING WIRE ONLY

**DH1010**

Replacement wire only - suitable for cattle, rams and goats. Order as a complete kit under DH1009, alternatively, handles can be ordered separately under DH1011.

**Wire length:** 12m.

**Weight:** 105.00 grams



## DEHORNER HANDLES (2) TO SUIT WIRE COIL

**DH1011**

Replacement handles only, for use with dehorning wire.

Available as a complete kit (DH1009) or order wire separately (DH1010).

**Weight:** 230.00 grams

# BIRTHING & WEANING PRODUCTS



## CALF BOTTLE TEATS

**CALF1003**

This latex teat fits onto a small bottle and is used to feed calves.

**Weight:** 5.00 grams



## CALFETERIA TEATS

**CALF1000**

Make your own "Calfeteria" using self sealing Calfeteria teats and Calfeteria tubing. Nipple design prevents milk from leaking from teats. A popular teat for feeding young calves.

Made from soft black rubber, these units are designed to fit the neck of most milk cans.

**Weight:** 30.00 grams



## CALFETERIA TUBING 30M

**CALF1001**

High quality plastic tubing for use with Calfeteria teats.

Available in a 30 metre roll, to be cut in sections as required.

**Weight:** 2.87 kg

# BIRTHING & WEANING PRODUCTS



## LAMB BOTTLE TEATS

**LBOT1000**

This latex teat fits onto a small bottle and is used to feed lambs.

**Weight:** 5.00 grams



## LAMBAR TEATS

**LBAR1000**

The Lambar Teat makes lamb feeding easy. For “starting off” or individual feeding, the Lambar device has been designed for the lamb raiser who feeds lambs individually.

**Weight:** 20.00 grams



## CALF SAVER LEADER

**CSAV1000**

The Calf Saver is the answer to many of the stockmans problems with difficult calvings.

The ratchet action has three separate hooks, one for each leg chain and one for the head sling. The hooks for the leg chains pull alternately each time you activate the jacking handle, giving a zig-zag action that aids in even the most difficult of calving situations.

The shaft is machined with grooves to avoid slippage. Straps are included.

**Weight:** 11.08 kg

**Note:** Plus Freight

# BIRTHING & WEANING PRODUCTS



## COW SLING ELFIN

ELF1000

Lift any cow in your herd easily, in a few minutes. Made of ultra heavy duty PVC with reinforced polyester webbing straps (Strain 6,000 lbs).

Simple one man operation, avoids any pressure points on your cow.

**Weight:** 9.56 kg



## KANT SUK CALF PLASTIC

KSC1000

A weaning device attached to the nose of calves. The device is designed with sharp teeth to help prevent the calf from latching onto the cow to feed.

**Weight:** 45.00 grams



## OBSTETRICAL CALVING ROPES 2

OB1003

This thick, soft nylon rope is specially made for obstetrics and comes with small eye loops on both ends.

**Weight:** 95.00 grams

**Dimensions:** 1.8m long x 12mm thick



# BIRTHING & WEANING PRODUCTS



**OBSTETRICAL CHAIN**  
750MM

**OB1000**

These chains are made from high quality, nickel plated material and durable for heavy-duty obstetrical use.

**Weight:** 210.00 grams

**Dimensions:** 750mm (30") in length



**OBSTETRICAL CHAIN**  
1500MM

**OB1002**

These chains are made from high quality, nickel plated material and durable for heavy-duty obstetrical use.

**Weight:** 395.00 grams

**Dimensions:** 1.5m (60") in length

# DRENCHING



## DRENCHER 30ML

**DREN1000**

An oral drencher with variable dosage up to 30ml dose control, designed for use with a vast range of oral anti-parasitic agents. The design of the drencher ensures operator comfort, easy administration, accurate dosing and durability.

Suitable for use with sheep, cattle, goats and swine.

**Weight:** 310.00 grams



## DRENCHER 60ML

**DREN1001**

An oral drencher with variable dosage up to 60ml dose control, designed for use with a vast range of oral anti-parasitic agents. The design of the drencher ensures operator comfort, easy administration, accurate dosing and durability.

Suitable for use with sheep, cattle, goats and swine.

**Weight:** 400.00 grams



## DRENCHER BACK PACK 5L UPRIGHT

**DREN1004**

Free standing for safe, easy filling and display purposes. This drencher's unique design incorporates a cavity for draw off and strap.

Ergonomically shaped to fit comfortably on the back of the user. Packs allow overfilling by 20% to cater for promotions where up to 20% extra product may be supplied.

5 Litre capacity.

**Weight:** 500.00 grams



## DRENCHER NON-VENTED DRAW OFF SPRING 23MM

**DRENSP1000**

Replacement spring to suit drencher.

**Weight:** 25.00 grams

# SAFETY & GENERAL CARE



## PINK EYE PATCH

**PINK EYE PATCH KIT**

**PINKE1000**

**PINK EYE PATCH GLUE ONLY**

**PINKE1001**

The economic impact of Pinkeye is enormous. Due to the pain and impaired vision, the affected animals suffer a severe setback. If left untreated, permanent blindness may occur. The predisposing causes of Pinkeye include dust, sunlight and flies. Sunlight can increase the severity of the disease and flies can also contribute to its spread.

Covering the eye with a Pinkeye patch therefore offers an effective once only treatment (requiring only one yarding), which lessens the severity of the disease. This Pinkeye Patch Kit promotes the healing of the eye and helps prevent the spread of the disease throughout your herd.

Contains 6 patches per packet, with glue to suit. Also available in a display box containing 12 packets.

**Weight:** 175 grams



## SHEEP CUFF

**SC1002**

Sheep cuffs are an ideal restraining device for veterinary treatments.

The cuff is fitted onto the 2 front legs and one back leg and does not affect the animal's blood circulation.

**Weight:** 150.00 grams

# SAFETY & GENERAL CARE



## VETFLEX BANDAGE ASST COLOURS 12 PACK

**VET1002**

This easy to tear, self adhesive bandage wrap is made from a lightweight, water-resistant and breathable fabric.

4.5m bandage length, available in a box of 12 multi-coloured (yellow, red, blue, pink, green, purple) rolls, or carton of 12 boxes.

**Weight:** 650.00 grams

**Note:** Minimum Order 12



## VETFLEX BANDAGE BLACK 12 PACK

**VET1001**

This easy to tear, self adhesive bandage wrap is made from a lightweight, water-resistant and breathable fabric.

4.5m bandage length, available in a box of 12 rolls (black only), or carton of 12 boxes.

**Weight:** 650.00 grams

**Note:** Minimum Order 12

# VACCINATION



## NEEDLES

<b>NEEDLES 16G x 1/2 INCH LUER</b>	<b>NEED1000</b>
<b>NEEDLES 16G X 3/4 INCH LUER</b>	<b>NEED1001</b>
<b>NEEDLES 18G X 1/4 INCH LUER</b>	<b>NEED1004</b>
<b>NEEDLES 18G X 1/2 INCH LUER</b>	<b>NEED1006</b>
<b>NEEDLES 18G X 3/4 INCH LUER</b>	<b>NEED1007</b>
<b>NEEDLES 18G X 1 INCH LUER</b>	<b>NEED1010</b>
<b>NEEDLES 18G X 1 1/2 INCH LUER</b>	<b>NEED1009</b>
<b>NEEDLES 20G X 1 INCH LUER</b>	<b>NEED1018</b>

Top quality stainless steel chromed brass luer lock hub.

Available in a pack of 12 needles, or 12 packs per box. Various sizes and gauges available.

**Weight:** 30.00 grams

## SYRINGES DISPOSABLE

<b>SYRINGE DISPOSABLE 5CC</b>	<b>SYR1002</b>
<b>SYRINGE DISPOSABLE 10CC</b>	<b>SYR1000</b>
<b>SYRINGE DISPOSABLE 20CC</b>	<b>SYR1001</b>
<b>SYRINGE DISPOSABLE 60CC</b>	<b>SYR1003</b>

The syringes are used with medical grade sterile disposable needles. Highly recommended as one of the best quality disposable syringes on the market.

Available in 5cc to 60cc capacity.

**Weight:** SYR1002 - 5.00 grams

**Weight:** SYR1000 - 8.00 grams

**Weight:** SYR1001 - 15.00 grams

**Weight:** SYR1003 - 35.00 grams





# VACCINATION



## VACCINATOR F GRIP

<b>VACCINATOR F GRIP</b> 1ML DISPOSABLE	<b>VAC1000</b>
<b>VACCINATOR F GRIP</b> 2ML DISPOSABLE	<b>VAC1001</b>
<b>VACCINATOR F GRIP</b> 5ML DISPOSABLE	<b>VAC1003</b>

This vaccinator comes with an F-shaped grip/handle and is extremely accurate for repeating dose and automatic refill. It has a durable construction with reliable valve system.

Available in 1ml, 2ml or 5ml.

**Weight:** VAC1000 - 90.00 grams

**Weight:** VAC1001 - 90.00 grams

**Weight:** VAC1003 - 95.00 grams



## VACCINATOR V GRIP

<b>VACCINATOR V GRIP 2ML</b>	<b>VAC1007</b>
<b>VACCINATOR V GRIP 5ML</b>	<b>VAC1009</b>
<b>VACCINATOR V GRIP 10ML</b>	<b>VAC1010</b>

This vaccinator comes with a V-shaped trigger style handle and is extremely accurate for repeating dose and automatic refill. It has a durable construction with reliable valve system.

Available in 2ml, 5ml or 10ml.

**Weight:** VAC1007 - 110.00 grams

**Weight:** VAC1009 - 115.00 grams

**Weight:** VAC1010 - 120.00 grams



## VACCINATOR V GRIP 15ML TOTAL PACK

**VAC1011**

The Vaccinator V Grip 15ml total pack includes:

15ml V Grip Unit, 6 stripe T-bar, standard pour on, fan spray, 70mm lamb drenching nozzles, 1.2m x 6.4mm i.d. delivery tube.

**Weight:** 315.00 grams

# SURGICAL EQUIPMENT



## SCALPEL BLADE HANDLE NO.4

**SCAL1000**

This scalpel blade handle, No.4 size, is made from medical grade stainless steel and is a popular castration tool.

**Weight:** 25.00 grams



## SCALPEL BLADES (BOX of 100)

**SCAL1001**

These medical grade, stainless steel blades are scalpels to suit the scalpel blade handle No.4.

**Weight:** 195.00 grams

# CATTLE PRODUCTS



## BULL RINGS

**BULL RING 2 1/2 INCH COPPER**

**BRING1001**

**BULL RING 2 3/4 INCH COPPER**

**BRING1002**

**BULL RING 3 INCH COPPER**

**BRING1007**

**BULL RING SPARE PIN**

**BRING1009**

These self-piercing, solid copper bull rings look good and are long-lasting and come with a securing pin.

Available dimensions refer to the outside diameter.

**Weight:** BRING1001 - 110.00 grams

**Weight:** BRING1002 - 120.00 grams

**Weight:** BRING1007 - 130.00 grams

# SHEEP SUPPLIES



## FOOTROT SHEAR HEAVY DUTY

**FROT1000**

Used for trimming hooves of livestock, the heavy-duty foot rot shear features high quality carbon steel blades, providing toughness and long lasting sharpness. The blades are easy to remove for routine sharpening or replacement.

**Weight:** 305.00 grams



## FOOTROT SHEAR REPLACEMENT BLADES (2)

**FROT1001**

Replacement blades to suit heavy duty foot rot shears (sold as a pair).

**Weight:** 105.00 grams



## FOOTROT SHEARS STANDARD

**FROT1002**

The ideal instrument to use in paring sheep and goats, forged from quality steel.

Double straight 228mm (9") shears.

**Weight:** 515.00 grams

# SHEEP SUPPLIES



## LAMB DOCKING IRON (LAMB DETAILER)

**LDI1000**

The Lamb Docking Iron is also known as a 'Lamb Detailer' and is used to remove tails from lambs.

An Australian designed, hand-held heated blade, which connects to a portable LP gas cylinder. Extensively field tested and proven to be fast, easy to use and highly efficient.

It minimizes lamb losses through improved mothering time, reduces lamb stress, blood loss and enables quicker healing.

Spare parts available.

**Weight:** 2.08 kg



## POWER PARER

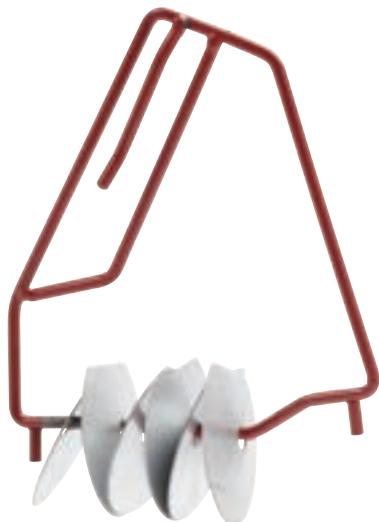
**PP1000**

The Power Parer makes light work of a hard job. Only the slightest pressure is needed to make a cut and hoofs can be pared in the middle of summer as there is no hoof too hard for air operated Parers.

Operating pressure 75-100 psi at 60 cuts per minute. Air consumption/min 3cfm.

Air hose length 3 metres.

**Weight:** 1.49 kg



## HELLS BELLS

**SHEEP1005**

Tin dog motivator.

**Weight:** 380.00 grams



# SHEEP SUPPLIES



## SHEEP TALLY COUNTER

SHEEP1001

An accurate hand counter that counts up to 4 digits: 9999.

**Weight:** 70.00 grams



## LUCK LAMB MARKING KNIFE

SHEEP1008

This precision lamb marking knife is an instrument designed for the positive castration of lambs.

**Weight:** 90.00 grams

# SHEEP SUPPLIES



## SHEPHERDS CROOK COMBINATION LONG

**SHEP1002**

Made of solid aluminium with anodised coating to avoid deterioration, the Shepherd's Crook Combination Long Hook comes with a long handle for long reach. The combination hook enables the user to hook a sheep either by the leg or head.

**Dimensions:** 1.36 (l) m

**Weight:** 500.00 grams

**Note:** Plus Freight

# WOOL HANDLING PRODUCTS



## ONE SHOT STENCIL BRUSH

**OSHOT1001**

This replacement stencil brush is for use with One Shot Refill ink cartridges. The no-mess disposable ink cartridge acts as a handle.

The cartridge attaches to the One Shot Brush by piercing the membrane and allowing ink to flow into the brush head.

Ink saturation is controlled by the valve action pump to deliver just the right amount, without blotting or leaking.

The brush comes with a cover to allow clean, easy storage and to prevent drying out.

**Weight:** 110.00 grams



## ONE SHOT STENCIL KIT COMPLETE

**OSHOT1002**

The no-mess disposable ink cartridge acts as a handle and can be attached to a brush or a roller.

The cartridge attaches to the One Shot Brush by piercing the membrane and allowing ink to flow into the brush head.

Ink saturation is controlled by the valve action pump to deliver just the right amount, without blotting or leaking.

The brush comes with a cover to allow clean, easy storage and to prevent drying out.

The kit includes 3 x cartridges and 1 x stencil brush.

**Weight:** 580.00 grams



## ONE SHOT REFILL

**OSHOT1000**

These disposable ink cartridges suit the One Shot Stencil Brush. The brush is suitable for general stencilling applications on porous surfaces that are protected from weather and ideal for uneven surfaces and textiles.

The single 1 litre pack is made up of 8 x 125ml cartridges.

Use with One Shot Brush (OSHOT1001).

**Weight:** 125.00 grams

# WOOL HANDLING PRODUCTS



## SHEARERS ADHESIVE 250ML

**SHE1002**

A quality adhesive, formulated for maximum bonding of paper. Support for quality grinding with the ability to strip easily and cleanly.

Available in 250ml bottles.

**Weight:** 280.00 grams



## SHEARERS ADHESIVE 500ML

**SHE1003**

A quality adhesive, formulated for maximum bonding of paper. Support for quality grinding with the ability to strip easily and cleanly.

Available in 500ml bottles.

**Weight:** 520.00 grams



## SHEARERS EMERY COARSE

**SHE1000**

This professional shearing emery (black) gives a clean, crisp spark for good grinding definition. Cut round to reduce wastage and time, and to comply with woolshed accreditation requirements.

Coarse grade.

**Weight:** 198.00 grams

**Note:** Minimum Order 10

# WOOL HANDLING PRODUCTS



## SHEARERS EMERY FINE

**SHE1001**

This professional shearing emery (black) gives a clean, crisp spark for good grinding definition. Cut round to reduce wastage and time, and to comply with woolshed accreditation requirements.

Fine grade.

**Weight:** 125.00 grams

**Note:** Minimum Order 10



## SHEARERS OIL CAN

**SHEAR1003**

This shearers oil can is made from galvanised steel and fitted with a brass spout, and is suitable for the maintenance of shearers tool kits.

**Weight:** 60.00 grams



## SHEARERS SCREWDRIVER

**SHEAR1002**

Designed for the changing of combs and cutters, this shearers screwdriver consists of 2 head flat screwdrivers mounted in the one tool.

**Weight:** 70.00 grams

# WOOL HANDLING PRODUCTS

## SHEARERS SCRUB NYLON FILLING

**SHEAR1001**



Nylon bristle brush with metal scraper and wooden handle grip.

**Weight:** 110.00 grams

## SHEARERS SCRUB UNION FIBRE

**SHEAR1000**



This quality scrubbing brush comes with union fibre bristles and metal scraper, as well as a wooden handle grip.

**Weight:** 130.00 grams

## ROSA SHEARS

**SHEA1004**



Made in New Zealand, the Rosa Dagging Shears are ground set, set sharpened and ready to cut. They are straight with pointed tips, 320mm in length and with blades 140mm in length.

**Weight:** 420.00 grams



# WOOL HANDLING PRODUCTS



## SHEARS MULESING 5 INCH

**SHEA1009**

These shears are ideal for dagging and trimming of all sheep. They are made by Burgon & Ball UK, from the finest quality English steel and are considered the finest shear in the world. Each shear is tested individually before leaving the factory.

Overall length is 300mm, blades are 125mm long.

**Weight:** 350.00 grams



## SHEARS TUS DAGGING 3 1/2 INCH W HOLSTER

**SHEA1002B**

These shears are ideal for dagging and trimming of all sheep. They are made by Burgon & Ball UK, from the finest quality English steel and are considered the finest shear in the world. Each shear is tested individually before leaving the factory.

Overall length is 230mm, blades are 90mm long.

Leather holster included.

**Weight:** 290.00 grams

# WOOL HANDLING PRODUCTS

## SHEARS TUS DAGGING 5 INCH

**SHEA1003**

These shears are ideal for dagging and trimming of all sheep and perfect for finer wool and clean fleeces.

They are made by Burgon & Ball UK, from the finest quality English steel and are considered the finest shear in the world. Each shear is tested individually before leaving the factory.

The blades are hardened and tempered to ensure the blade retains its edge and maximum performance achieved, while patented double hollow grinding is the secret behind their unique sharpness.

The shears bow is rolled - adding crucial strength while softening the squeeze for extra comfort. The blade and shank are one piece (not riveted) so they can be 'set' to give the cleanest cut with this professional, double-bow shear.

Overall length approx. 300mm, blade approx. 130mm long.

**Weight:** 345.00 grams



## SHEARS TUS LAMB 6 INCH

**SHEA1005**

These shears are ideal for dagging and trimming of all sheep and perfect for finer wool and clean fleeces.

They are made by Burgon & Ball UK, from the finest quality English steel and are considered the finest shear in the world. Each shear is tested individually before leaving the factory.

The blades are hardened and tempered to ensure the blade retains its edge and maximum performance achieved, while patented double hollow grinding is the secret behind their unique sharpness.

The shears bow is rolled - adding crucial strength while softening the squeeze for extra comfort. The blade and shank are one piece (not riveted) so they can be 'set' to give the cleanest cut with this professional, double-bow shear.

Overall length approx. 320mm, blade approx. 150mm long, available in left-handed or right-handed models.

**Weight:** 365.00 grams



# WOOL HANDLING PRODUCTS

## SHEARS TUS SHEEP 7 1/4 INCH

**SHEA1007**



These shears are ideal for dagging and trimming of all sheep and perfect for finer wool and clean fleeces.

They are made by Burgon & Ball UK, from the finest quality English steel and are considered the finest shear in the world. Each shear is tested individually before leaving the factory.

The blades are hardened and tempered to ensure the blade retains its edge and maximum performance achieved, while patented double hollow grinding is the secret behind their unique sharpness.

The shears bow is rolled - adding crucial strength while softening the squeeze for extra comfort. The blade and shank are one piece (not riveted) so they can be 'set' to give the cleanest cut with this professional, double-bow shear.

Overall length approx. 370mm, blade approx. 185mm long, available in left-handed or right-handed models.

**Weight:** 495.00 grams

## HOLSTER TO SUIT 3 1/2 INCH DAGGING SHEAR

**SHEA1010**



Leather holster that can be slipped onto users belt for placement of shears.

**Weight:** 35.00 grams

## SHARPENING JIG

**JIG1000**



This sharpening jig is used to sharpen shears for mulesing dagging, blade shearing, knives and secateurs, as well as cutting and setting shears and in doing so, doubles the life of the shears.

**Weight:** 1.32 kg

# WOOL HANDLING PRODUCTS



## SHARPENING STONE

**STONE1000**

A circular sharpening stone used for sharpening shears, axes and knives.

**Weight:** 590.00 grams



## STENCIL SPRAY AEROSOL

**STENCIL SPRAY AEROSOL**  
BLACK

**STEN1002**

**STENCIL SPRAY AEROSOL**  
BLUE

**STEN1007**

This stencil spray aerosol with toluene-free formula is specifically formulated for stencil applications, while also suitable for general colour coding.

It is fast-drying and lightfast paint and has a reduced spray drift, allowing maximum accuracy of spray pattern. The unique formulation minimises build-up when used on stencils.

Available in black or blue.

**Weight:** 425.00 grams

**Note:** Plus Freight



## WOOLBALE FASTENERS

**WOOLBALE FASTENERS**  
500 PACK

**WBALE1013**

**WOOLBALE FASTENERS**  
2000 PACK

**WBALE1014**

Used for sealing of wool bales.

Available in pack sizes of 500 and 2000.

**Weight:** WBALE1013 - 2.81 kg

**Weight:** WBALE1014 - 11.39 kg

**Note:** Plus Freight



# WOOL HANDLING PRODUCTS



## WOOLBALE HOOK DOUBLE PRONG

**WBALE1018**

This hard-drawn steel, double-pronged woolbale hook is a strong construction with flame-hardened and dipped tips.

Prong length 200mm.

**Weight:** 450.00 grams



## WOOLBALE HOOK SINGLE PRONG

**WBALE1017**

These hard-drawn steel, single-pronged woolbale hook is a strong construction with a flame-hardened and dipped tip.

Prong length 200mm.

**Weight:** 250.00 grams



## WOOLBALE MARKING PEN ART 100

**WBALE1010**

These woolbale marking pens with wide chisel point felt tip will dry instantly, and the waterproof ink won't bleed or blur when damp.

They are Xylene free to eliminate the risk of respiratory irritation during use, and the strong fibre tip will deliver reliable, long-life marking, even in industrial applications.

Use to mark cartons, paper, wood, glass, steel and most other surfaces - suitable for most commercial purposes.

Packaged in boxes of 6.

**Weight:** 35.00 grams

# WOOL HANDLING PRODUCTS



## WOOLBALE MARKING PEN ART 70

**WBALE1011**

These wool bale marking pens with narrow, bullet point felt tip will dry instantly, and the waterproof ink won't bleed or blur when damp.

They are Xylene free to eliminate the risk of respiratory irritation during use, and the strong fibre tip will deliver reliable, long-life marking, even in industrial applications.

Use to mark cartons, paper, wood, glass, steel and most other surfaces - suitable for most commercial purposes.

Packaged in boxes of 12.

**Weight:** 15.00 grams



## WOOLBALE STENCIL CLASS SET OF 4

**WBALE1002B**

Lightweight, non-corrosive, washable polyurethane stencil (rectangular in shape), complete with handle for easy use.

Set of 4 - FLC, STN, CRT, LMS.

Lettering is approx. 75mm high.

**Weight:** 195.00 grams



## WOOLBALE STENCIL CLASS SET OF 6

**WBALE1001B**

Lightweight, non-corrosive, washable polyurethane stencil discs, complete with handle for easy use.

Set of 6 - AAAM, COM, BBB, PCS, BLS, LKS.

Lettering is approx. 75mm high.

**Weight:** 200.00 grams



# WOOL HANDLING PRODUCTS



## WOOLBALE STENCIL HANDLE

**WSH1000**

Replacement handle to suit woolbale stencil. Black in colour. Comes with 2 securing screws.

**Weight:** 15.00 grams



## WOOLBALE STENCIL INK 500ML

**WBALE1007**

Fully scourable woolbale ink, can be thinned with water. For use with woolbale stencils.

Available in 500ml bottle.

**Weight:** 625.00 grams



## WOOLBALE STENCILS

**WOOLBALE STENCIL SET OF 0-9**

**WBALE1003B**

**WOOLBALE STENCIL SET OF A-M**

**WBALE1004B**

**WOOLBALE STENCIL SET OF N-Z**

**WBALE1005B**

**WOOLBALE STENCILS MADE TO ORDER**

**WBALE1000B**

Lightweight, non-corrosive, washable polyurethane stencil disc, complete with handle for easy use. Available with numbers or letters.

Numbers and letters are approx. 75mm high.

**Weight:** 195.00 grams

# WOOL HANDLING PRODUCTS



## WOOLSCOOPS SUPER (2)

WBALE1019

Suitable for scooping wool, leaves and general waste.

**Weight:** 550.00 grams



## WOOLSHED BROOM

WSHED1000

Leader highest quality cane and millet broom.

Available in cartons of 6.

**Weight:** 1.28 kg

**Note:** Plus Freight



# WOOL HANDLING PRODUCTS

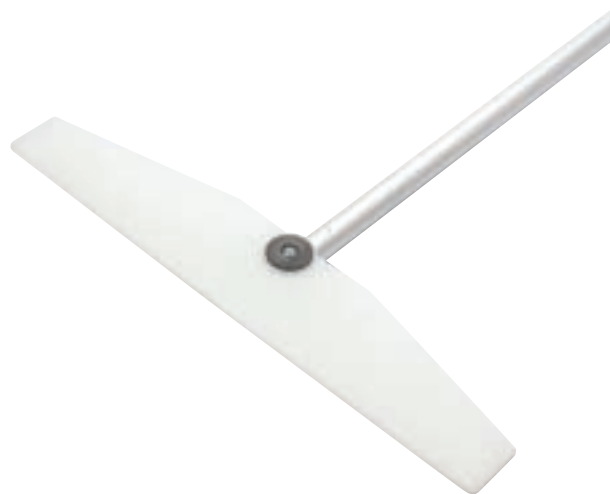


## WOOLSWEEP HEAD ONLY

**WS1002**

Replacement plastic head for woolsweeps, suitable for telescopic or wooden handles.

**Weight:** 160.00 grams



## WOOLSWEEP TELESCOPIC

**WS1000**

A light aluminium woolsweep broom with adjustable extension handle, twist-locks into position from 1 metre to 2 metres, depending on individual height.

This telescopic woolsweep is ideal for sorting wool on the board, and has smooth and tapered edges, ensuring no contamination of the wool.

The Woolsweep won't bend or break when moving large quantities of wool.

**Weight:** 515.00 grams

**Note:** Plus Freight



## WOOLSWEEP WOODEN HANDLE

**WS1001**

This wooden handled woolsweep is ideal for sorting wool on the board, and has smooth and tapered edges, ensuring no contamination of the wool.

The Woolsweep won't bend or break when moving large quantities of wool.

**Weight:** 400.00 grams

**Note:** Plus Freight

# COMPANION ANIMALS



## DOG COLLARS

<b>DOG COLLAR 25MM X 350MM</b>	<b>DOG1051</b>
<b>DOG COLLAR 25MM X 450MM</b>	<b>DOG1000</b>
<b>DOG COLLAR 25MM X 500MM</b>	<b>DOG1001</b>
<b>DOG COLLAR 25MM X 550MM</b>	<b>DOG1002</b>
<b>DOG COLLAR 25MM X 600MM</b>	<b>DOG1003</b>

Deluxe, double thickness 25mm (1") Nylon Collars. Extra strong brass eyelets, roll buckle & "D" ring.

Available in 5 sizes in brown, green, yellow, black, red & blue.

BROWN	GREEN	YELLOW	BLACK	RED	BLUE
2	4	7	9	10	11

### CODE + COLOUR NUMBER = FINAL ORDER CODE

For Example, the stock code for a Black Dog Collar 500mm is **DOG10019**



## DOG MUZZLE NEWMARKET **DOG1008**

The Newmarket Dog Muzzle is suitable for all working dogs. It has 3.15mm diameter wire and an adjustable leather collar attachment.

This is the classic muzzle for Australian cattle dogs, being slightly wider than normal sheep dog muzzles (but will still fit many sheep dogs satisfactorily).

Adjustable to head length and girth for secure fit.

**Dimensions:** Width of cage 80mm, height of cage opening 110mm.  
**Weight:** 275.00 grams

# COMPANION ANIMALS



## DOG MUZZLE NYLON

<b>DOG MUZZLE NYLON SIZE 1</b> E.g. Terrier, Dachshund	<b>DOG1021</b>
<b>DOG MUZZLE NYLON SIZE 2</b> E.g. Jack Russell, Cavalier King Charles	<b>DOG1022</b>
<b>DOG MUZZLE NYLON SIZE 3</b> E.g. Beagle, Cocker Spaniel	<b>DOG1023</b>
<b>DOG MUZZLE NYLON SIZE 4</b> E.g. Kelpie, Border Collie	<b>DOG1024</b>
<b>DOG MUZZLE NYLON SIZE 5</b> E.g. Labrador, German Shepherd	<b>DOG1025</b>
<b>DOG MUZZLE NYLON SIZE 6</b> E.g. Great Dane, Saint Bernard	<b>DOG1026</b>

Suitable for all dogs. High grade plastic with heavy duty eyelets, banding and buckle.

Colours may vary.  
Available in 6 sizes.



## DOG TIE OUT CHAINS

<b>DOG TIE OUT CHAIN</b> 2.0MM x 1.8M	<b>DOG1004</b>
<b>DOG TIE OUT CHAIN</b> 2.5MM x 1.8M	<b>DOG1005</b>
<b>DOG TIE OUT CHAIN</b> 3.0MM x 1.8M	<b>DOG1006</b>
<b>DOG TIE OUT CHAIN</b> 3.5MM x 1.8M	<b>DOG1007</b>
<b>DOG TIE OUT CHAIN</b> 5.0MM X 1.8M	<b>DOG1050</b>
<b>DOG TIE OUT CHAIN</b> 5.0MM x 3.0M	<b>DOG1052</b>

Heavy duty adjustable dog chains with swivel snap at either end.

Available in 5 gauge sizes.



# COMPANION ANIMALS



## DOG WHISTLE

DOG1013

This user-friendly, plastic, lightweight whistle conveniently fits in pocket for regular use.

Colours may vary.

**Weight:** 5.00 grams



## BRASS SWIVELS

BRASS SWIVEL SNAP

SNAP1000

BRASS SWIVEL SNAP LARGE

SNAP1001

Solid Brass Swivel Snap. Bolt style clip.

Available in 90mm or 120mm length.

**Weight:** SNAP1000 - 55.00 grams

**Weight:** SNAP1001 - 115.00 grams



# WATERING PRODUCTS



## TROUGH BLOCKS

AQUA 220G X 18 [cobolt ]

**BLOC1000**

The Leader Aqua Trough Block is designed to control the build-up of algae and slime in stock water troughs, to ensure clean drinking water for livestock over a period of time.

One trough block treats approx. 6750 litres of water. Place one block for 30 sheep or 15 cattle in a non-metallic or painted water trough. Replace block when slime starts to return.

Usually lasts 5 - 8 weeks. Cobalt is added as a nutritional supplement for cattle and sheep, where diet levels may be low.

DO NOT use in areas where copper toxicity is known to occur, or in bare metal troughs.

Active Constituent: 63g/kg Copper(Cu) Present as 250b/kg Copper Sulphate Pentahydrate.

**\*CAUTION:** If stock are suspected of having Lupinosis, remove blocks from troughs immediately.

**Weight:** 6.12 kg

**Note:** Plus Freight



## STOCK WATERER

METAL

**WAT1000**

Maintain a constant level of water for stock - with adjustable float. No training required - this is a simple, automatic way to water your stock or pets, which outlasts and outperforms other watering systems. The stock waterer comes with a fast and easy to clean metal bowl with a large, deep drink area.

The water flows in automatically when water drops below the desired level and shuts off automatically when the bowl is refilled.

**Weight:** 1.95 kg



## STOCK WATERER

NYLON

**WAT1001**

Maintain a constant level of water for stock - comes with adjustable float. No training required - this is a simple, automatic way to water stock or pets, which outlasts and outperforms other watering systems. The stock waterer comes with a fast and easy to clean, heavy duty nylon bowl with a large, deep drink area.

The water flows in automatically when water drops below the desired level and shuts off automatically when the bowl is refilled.

**Weight:** 1.48 kg

# WATERING PRODUCTS



## FLOAT KIT COMPLETE

**FLOAT KIT COMPLETE F**  
NYLON WATERER

**WAT1004N**

**FLOAT KIT COMPLETE F**  
METAL WATERER

**WAT1004M**

Replacement float kits, for the metal and the nylon stock waterers.

**Weight:** WAT1004N - 70.00 grams

**Weight:** WAT1004M - 84.00 grams



## MEASURING JUGS

**MEASURING JUG 250ML**

**JUG1000**

**MEASURING JUG 1L**

**JUG1001**

**MEASURING JUG 5L**

**JUG1003**

Great pouring control, strong handle, raised measuring graduations, non spilling and manufactured from chemical resistant polypropylene.

Available in 3 sizes.

**Weight:** JUG1000 - 50.00 grams

**Weight:** JUG1001 - 110.00 grams

**Weight:** JUG1003 - 405.00 grams

# WATERING PRODUCTS



## RAIN GAUGES

**RAIN GAUGE 600ML**

**RAIN1000**

**RAIN GAUGE 1000ML**

**RAIN1001**

This rain gauge measures rainfall highly accurately and is easy to read.

Available in 600ml and 1000ml capacity.

**Weight:** RAIN1000 - 270.00 grams

**Weight:** RAIN1001 - 600.00 grams



## PIG NIPPLE DRINKER 1/2 INCH

**PIG1001**

A robust stainless steel 1/2" bite type pig nipple drinker, used for watering pigs.

**Weight:** 85.00 grams





**LEADER PRODUCTS (AUSTRALIA)**

465 Hume Highway, Craigieburn, VIC 3064

**P** (03) 8339 9000

**E** [enquiries@leaderproducts.com.au](mailto:enquiries@leaderproducts.com.au)

**W** [www.leaderproducts.com.au](http://www.leaderproducts.com.au)

**CONTACT YOUR REPRESENTATIVE BELOW:**



[leaderproducts.com.au](http://leaderproducts.com.au)