

PRODUCT GUIDE

September 2025



CONRON

A Civilcast Company

-  1300 084 698
-  conronstockcrete.com.au
-  sales@conron.com.au



ABOUT CONRON

Conron, part of Civilcast, is renowned for its excellence in precast concrete livestock watering solutions. As an industry leader, Conron's commitment to innovation and quality has distinguished it in the agricultural sector.

Starting from humble beginnings in a farm shed, Conron initially focused on producing highly designed and engineered concrete water troughs. Over the years, their product range has expanded significantly to meet the specialised precast needs of the agriculture and rural sectors. Conron offers a comprehensive range of precast concrete products, including:

- Water Troughs
- Feed Bunks
- Grain Walls
- Stockgrids

Each product is meticulously designed and built to ensure durability and functionality, reflecting Conron's dedication to meeting the high standards of the agricultural industry.

The Conron team consistently raises the bar in the design and construction of precast agricultural products. Their focus on innovation ensures that they remain at the forefront of industry developments, providing customers with the latest and most efficient solutions.

Conron's success is rooted in their unwavering commitment to quality and customer satisfaction. By continually evolving their product offerings and maintaining a high standard of craftsmanship, Conron has established itself as a trusted name in the agricultural community.

In July 2024, Conron became part of Civilcast, a market leader in the manufacture and supply of precast and steel products to the civil infrastructure industry. Civilcast, an Australian enterprise privately owned and operated, is dedicated to achieving excellence in manufacturing and supplying products that cater to a broad spectrum of civil construction requirements. These include stormwater management, water systems, sewer infrastructure, and applications in electrical and communication fields.

Looking ahead, Conron aims to further enhance their product range and continue leading the industry with innovative precast solutions. Supported by Civilcast's extensive expertise and resources, Conron is poised to expand its impact, delivering reliable, high-quality products that meet the evolving needs of farmers and rural businesses.



CONTENTS

Trough Features	4	Mini	20
Trough Tips	5	Trough Pad	21
Lambinator	6	Trough Guard	22
Rambo	7	Accessories	23
Beef Bar	8	Brass Float Valves	24
Big Beefa	9	Hansen Valves	25
Lamblot	10	The Grain Wall	26
Beef Bunk	11	Chain Lifting Kit	27
Lambaghini	12	Concrete Pipe	28
Burger	13	HDPE Polyethylene Drainage Pipe	29
Tubby 1000	14	Headwalls	30
Tubby 2100	15	Box Culverts	31
4ft All Rounder	16	Conron Stockgrids	32
4ft Combo	17	Stockie 8T	33
10ft Combo	18	Stockie 16T	34
16ft Combo	19	Stockie 20T	35

TROUGH FEATURES



Built to Last

Our troughs are poured as a single piece, ensuring they are exceptionally sturdy and stockproof. Conron Stockcrete troughs are a long-term investment and a valuable asset.



Easy to Clean

Our troughs are designed for easy cleaning, featuring a tapered center drainage system aligned with a 4" outlet and sweep-through access between the float and drinking areas.



Livestock Production

Enhance productivity, efficiency, and water quality to boost animal health and weight gains with cooler, cleaner watering points.



Easy Access

Accessing the float valve is effortless, regardless of your strength. The sturdy yet lightweight galvanised chequerplate lid is easy to lift, providing ample space to reach the float valve.



Fully Tested

Our trough designs have been tested with cattle, sheep, and horses, proving their durability. Say goodbye to empty tanks or trough damage caused by itchy or curious cattle.



Top-of-the-Line Troughs

We employ synthetic fibres, steel reinforcement, and 45MPa computer-batched concrete to extend the lifespan of our troughs. The walls are 70mm thick, with a base thickness of 100mm, ensuring exceptional durability and longevity.

TROUGH TIPS

Preparing for Your Delivery

We take pride in ensuring smooth and efficient delivery of your products. Here are some quick tips to consider prior to your delivery:

- **Access:** Our truck and trailer are 20 meters long and weigh up to 40 tonnes when loaded. Please consider this when planning drop-off locations, especially regarding access through tight gateways, laneways, and under overhanging branches.
- **Unloading Assistance:** To facilitate easier unloading using your tractor forks, we recommend having timbers, tires, or pallets ready to place the troughs on.

Connecting Poly to Brass

Connecting poly to brass can be challenging but with the right approach, you can achieve a leak-free join. Here are some tips:

- **What you Need:** Plumber's tape, file
- **Prepare the Poly Thread:** Use a file or similar tool to roughen up or create a slight "burr" on the plastic thread. This helps the plumber's tape adhere better to the plastic surface.
- **Starting the Tape:** Begin wrapping the plumber's tape a couple of threads away from the end of the poly thread. Leave the first two or three threads exposed to ensure a proper connection.
- **Wrap Clockwise:** Always apply the plumber's tape in a clockwise direction. If applied counterclockwise, it may unravel when you tighten the fittings.
- **Apply Liquid Paste:** Before screwing the fittings together, apply a small amount of liquid paste over the plumber's tape. This helps create a reliable seal.
- **Tightening:** Hand-tighten the fittings first, and then use a wrench for a couple of additional turns. Avoid over-tightening, as it can damage the threads or fittings.



LAMBINATOR

8ft SHEEP / CATTLE TROUGH

The Lambinator isn't just for lambs—it's a highly versatile trough that complements mixed grazing operations. Ideal for both sheep and cattle. Widely favoured and extensively used throughout Eastern Australia.



- Product Code:** AG-8FTLAMBINATOR
- Dimensions:** 3300mm L x 700mm W x 390mm H
- Drinking Space:** 8ft
- Capacity:** 450 Litres
- Weight:** 1050kg
- Inlet:** 2" Brass
- Outlet :** 4" Brass

[BUILT TO LAST]
100% STOCKPROOF
 RELIABLE & PEACE OF MIND STOCK WATERING

RAMBO

16ft SHEEP / CATTLE TROUGH

The Rambo is a highly sought-after trough designed for larger mobs of sheep and cattle. Capable of holding 833 litres of water, this trough surpasses your stockwater needs and expectations.



- Product Code:** AG-16FTRAMBO
- Dimensions:** 5200mm L x 700mm W x 390mm H
- Drinking Space:** 16ft
- Capacity:** 833 Litres
- Weight:** 1580kg
- Inlet:** 2" Brass
- Outlet :** 4" Brass

[BUILT TO LAST]
100% STOCKPROOF
 RELIABLE & PEACE OF MIND STOCK WATERING

BEEF BAR

8ft CATTLE TROUGH

The Beef Bar is one of the most popular troughs in our product range. A capacity of 620L and 8ft of drinking space, the Beef Bar is the ultimate hydration station for your herd.



- Product Code:** AG-8FTBEEFBAR
- Dimensions:** 3300mm L x 700mm W x 500mm H
- Drinking Space:** 8ft
- Capacity:** 620 Litres
- Weight:** 1200kg
- Inlet:** 2" Brass
- Outlet :** 4" Brass

[BUILT TO LAST]
100% STOCKPROOF
 RELIABLE & PEACE OF MIND STOCK WATERING

BIG BEEFA

16ft CATTLE TROUGH

The Big Beefa trough is specifically crafted for sizable groups of cattle. With a substantial capacity of 1200 litres, it stands as the largest cattle trough in this range. Its expansive size comfortably accommodates multiple cattle simultaneously, offering ample drinking space.



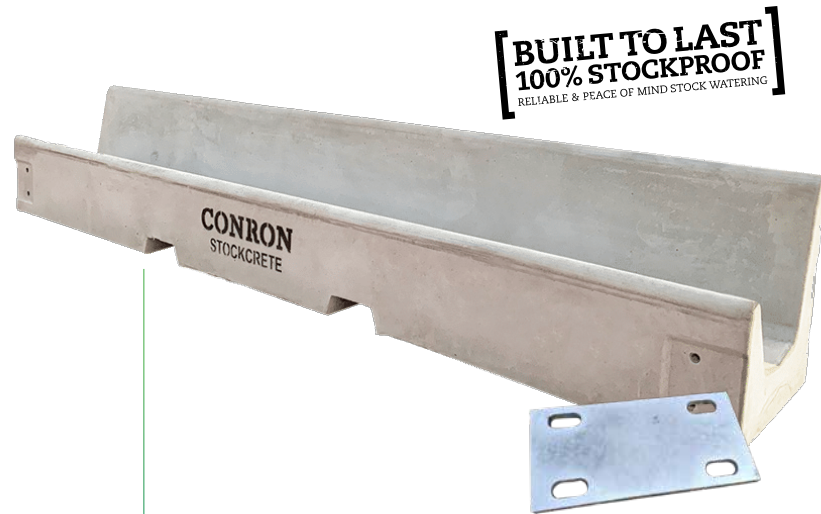
- Product Code:** AG-16FTBIGBEEFA
- Dimensions:** 5200mm L x 700mm W x 500mm H
- Drinking Space:** 16ft
- Capacity:** 1200 Litres
- Weight:** 2100kg
- Inlet:** 2" Brass
- Outlet :** 4" Brass

[BUILT TO LAST]
100% STOCKPROOF
 RELIABLE & PEACE OF MIND STOCK WATERING

LAMBLLOT

LAMB FEEDLOT BUNK

The Lamblot Feed Bunk is perfect for feeding sheep and lambs in various settings such as paddocks, containment lots, drought lots, or feedlots. Easy to fill with your feed wagon. Holds approximately 0.35 cubic meters (m³) of feed. Comes with built-in ferrules for effortless connection of bunks using our galvanised plates for continuous troughing and fence uprights.



Product Code: AG-LAMBLLOT
Dimensions: 3000mm L x 500mm W
Wall Height: 320mm H (front) / 520mm H (rear)
Capacity: 0.35m³
Weight: 890kg

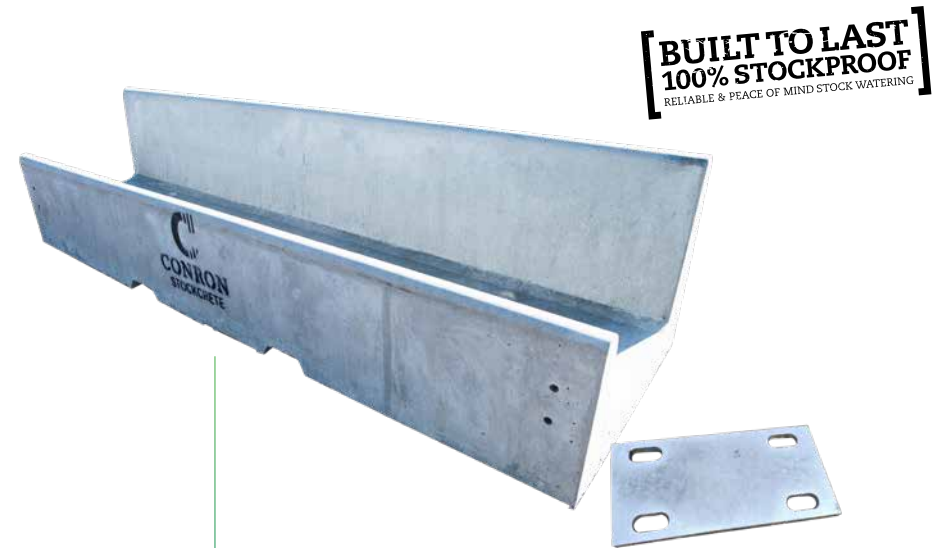
Bunk Joining Plates

Durable and easy to install, Conron Bunk Joining Plates provide a strong and secure connection between individual stock bunk sections. These galvanised steel plates help maintain alignment and structural integrity across your feed bunk installations.

BEEF BUNK

CATTLE FEEDLOT BUNK

The Beef Bunk sets the standard in open feed bunks, capable of holding approximately 1 cubic meter (m³) of feed. Features built-in ferrules for easy joining using our heavy-duty galvanised plates. Provides a versatile and cost-effective solution for feedlots, containment areas, or drought lots.



Product Code: AG-BEEFBUNK
Dimensions: 3000mm L x 800mm W
Wall Height: 500mm H (front) / 700mm H (rear)
Capacity: 1m³
Weight: 1470kg

Bunk Joining Plates

Durable and easy to install, Conron Bunk Joining Plates provide a strong and secure connection between individual stock bunk sections. These galvanised steel plates help maintain alignment and structural integrity across your feed bunk installations.

LAMBAGHINI

SHEEP FEEDLOT WATER TROUGH

The Lambaghini is designed for easy cleaning with a built-in sweep-out feature and sump equipped with a strainer basket to capture any straw and grain that enters the trough. Elevated on pedestals to allow dust to blow underneath rather than into the trough. The pedestals also prevent lambs from standing inside the trough, ensuring cleanliness and hygiene. The Lambaghini is the ideal water solution for both Feedlot & Containment situations.



- Product Code:** AG-9FTLAMBAGHINI
- Dimensions:** 3300mm L x 480mm W x 400mm H
- Drinking Depth:** 250mm
- Capacity:** 100 Litres
- Weight:** 556kg
- Inlet:** 1" Brass
- Outlet :** 2" Brass

[BUILT TO LAST]
100% STOCKPROOF
 RELIABLE & PEACE OF MIND STOCK WATERING

BURGER

ULTIMATE CATTLE FEEDLOT WATER TROUGH

The Burger is ergonomically designed with both the producer and animal welfare in mind. Trapezium shape facilitates easy pen cleaning. Featuring a bottom fill inlet and bottom outlet for efficient water management. Fully enclosed plumbing area safeguarded by stainless steel panels for durability and protection.



- Product Code:** AG-16FTBURGER
- Dimensions:** 5000mm L x 650/780mm W x 700mm H
- Drinking Depth:** 350mm
- Capacity:** 750 Litres
- Weight:** 2400kg
- Inlet:** 2" Brass (bottom inlet fill)
- Outlet :** 3" Brass (Bottom Outlet)

[BUILT TO LAST]
100% STOCKPROOF
 RELIABLE & PEACE OF MIND STOCK WATERING

TUBBY 1000

THE CHUBBY TUBBY

The ideal watering hole for your horses and cattle. Like all our troughs, the Tubby 1000 is poured as one piece including the float cover. Your livestock will be cheering to have a stubby at the Tubby 1000.



Product Code: AG-TUBBY1000
Dimensions: 1650mm diam. x 600mm H
Capacity: 1000 Litres
Weight: 1280kg
Inlet: 2" Brass
Outlet : 4" Brass

[BUILT TO LAST]
100% STOCKPROOF
 RELIABLE & PEACE OF MIND STOCK WATERING

TUBBY 2100

TUBBY BY NAME, TUBBY BY NATURE

The Tubby 2100, our octagonal or 'round' trough, incorporates all the Conron trough features and boasts a substantial capacity of 2100 litres. Poured as a single piece, including the float cover, The Tubby is built to withstand the demands of large herds with ease.



Product Code: AG-TUBBY2100
Dimensions: 2450mm diam. x 600mm H
Capacity: 2100 Litres
Weight: 2200kg
Inlet: 2" Brass
Outlet : 4" Brass

[BUILT TO LAST]
100% STOCKPROOF
 RELIABLE & PEACE OF MIND STOCK WATERING

4ft ALL ROUNDER

4ft WATER TROUGH

Ideal for sheep or cattle yards, horse or bull paddocks, and even with free-range pigs, this versatile trough can fit into any space. It's the perfect choice for all your watering needs, wherever you place it.



- Product Code:** AG-4FTALLROUNDER
- Dimensions:** 2000mm L x 700mm W x 390mm H
- Drinking Space:** 4ft
- Capacity:** 250 Litres
- Weight:** 730kg
- Inlet:** 2" Brass
- Outlet :** 4" Brass

[BUILT TO LAST]
100% STOCKPROOF
RELIABLE & PEACE OF MIND STOCK WATERING

4ft COMBO

DOUBLE ENDED TROUGH

One trough, one float valve, two pens, no problem! The Conron 4Ft Combo is ideal for stables, cattle yards, day yards, and is excellent for yard weaning calves. Poured as a single piece, it is incredibly durable and virtually indestructible. With the float valve securely protected, it ensures no flooded pens due to animal access.



- Product Code:** AG-4FTCOMBO
- Dimensions:** 1780mm L x 800mm W x 600mm H
- Drinking Space:** 2ft either side of float box
- Capacity:** 495 Litres
- Weight:** 1000kg
- Inlet:** 2" Brass
- Outlet :** 4" Brass

[BUILT TO LAST]
100% STOCKPROOF
RELIABLE & PEACE OF MIND STOCK WATERING

10ft COMBO

DOUBLE ENDED TROUGH

One pipe. One Float. Two paddocks. No worries! Our Combo troughs offer producers the convenience of watering two paddocks from a single water point. The 10ft Combo provides 5 feet of drinking space on each side of the float box, making it suitable for both sheep and cattle.



- Product Code:** AG-10FTCOMBO
- Dimensions:** 3300mm L x 800mm W x 390mm H
- Drinking Space:** 5ft either side of float box
- Capacity:** 645 Litres
- Weight:** 1050kg
- Inlet:** 2" Brass
- Outlet :** 4" Brass

BUILT TO LAST
100% STOCKPROOF
RELIABLE & PEACE OF MIND STOCK WATERING

16ft COMBO

DOUBLE ENDED TROUGH

The 16ft Combo provides an impressive 8 feet of drinking space on each side of the float box. Similar to all our troughs, it features a design that allows for easy sweeping through the float box, while the tapered base ensures effortless cleaning. Suitable for both sheep and cattle, it offers versatility and convenience for your watering needs.

Available in multiple sizes!



- Product Code:** AG-16FTCOMBO
- Dimensions:** 5200mm L x 700mm W x 390mm H
- Drinking Space:** 16ft either side of float box
- Capacity:** 833 Litres
- Weight:** 1600kg
- Inlet:** 2" Brass
- Outlet :** 4" Brass

BUILT TO LAST
100% STOCKPROOF
RELIABLE & PEACE OF MIND STOCK WATERING

MINI

THE LITTLE GUY

Ideal for Various Animals: Dogs, Chickens, Ducks, Horses, Pigs, and More! The Mini comes equipped with our unique "Mini" float valve, making it perfect for a wide range of animals.



Product Code: AG-MINI22LT
Dimensions: 650mm L x 450mm W x 200mm H
Capacity: 22 Litres
Weight: 75kg
Inlet: 1" Brass
Outlet : 2" Brass

TROUGH PAD

THE ULTIMATE CONVENIENCE

Our Trough Pads offer a hassle-free setup without the need for additional labour or materials. Just place the Trough Pad on your prepared, level site and position the trough over the purpose-built recess and plumbing area. For 8ft troughs, use 1 Pad; for 16ft troughs, use 2 Pads.



Product Code: AG-TROUGH PAD
Dimensions: 3300mm L x 2400mm W x 80mm H
Weight: 1490kg

TROUGH GUARD

Our new Trough Guard is designed to prevent livestock from stepping into or accidentally falling in to the trough.

Maintain cleaner troughs and safeguard your livestock, while enhancing paddock performance - the Conron Trough Guard takes care of the hard work.

Available in two sizes to suit our 8FT and 16FT trough options.



Product Codes: AG-TROUGHGUARD8FT
AG-TROUGHGUARD16FT

[BUILT TO LAST]
100% STOCKPROOF
RELIABLE & PEACE OF MIND STOCK WATERING

TROUGH BROOM

Custom profile brush head designed to suit our trough profile. Featuring a double layer brush and super strong aluminium handle, this makes cleaning your Conron Trough a breeze.



LAMBAGHINI BROOM

Take the time and effort out of cleaning your Lambaghini trough with our purpose built Lambaghini Broom. A quick sweep through and job done



SPARE PARTS

We stock a large range of parts and accessories, contact us with any enquiries.

BRASS FLOAT VALVES

Our brass float valves feature a durable, heavy-duty brass float with a stainless-steel seat and a 9-inch float ball, making them ideal for situations where water may freeze.



40mm Brass High Pressure Float Valve

Operates from 20 to 120 PSI (100 litres per minute @ 120 PSI). This Float Valve is supplied with a 50-40mm reducing bush for easy plumbing to your Conron trough.

40mm Brass Low Pressure Float Valve

Operates from 0-25 PSI (400 litres per minute @ 25 PSI). This Float Valve is supplied with a 50-40mm reducing bush for easy plumbing to your Conron trough.

50mm Brass Low Pressure Float Valve

Operates from 0 to 10 PSI (300 litres per minute @ 8 PSI).

HANSEN VALVES

Great value for money all round float valves for high and low water pressure situations.



Supa-Flo Long Arm Valves

Operates from 3 PSI to 175 PSI (188 litres per minute @ 29 PSI). Supplied with a 50-25mm reducing nipple.

Supa-Flo Short Arm Valves

Operates from 0 PSI to 130 PSI (188 litres per minute @ 29 PSI). Suitable for our Lambaghini Trough.



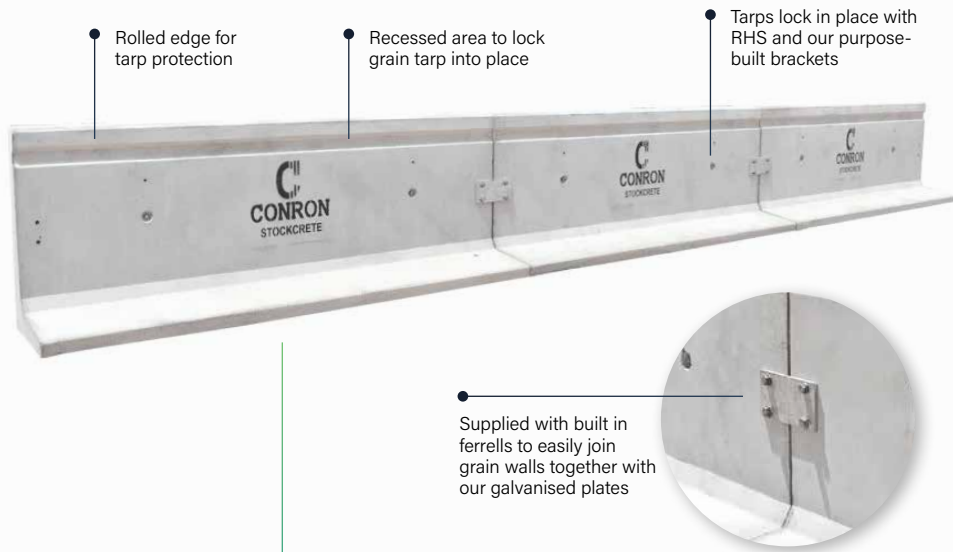
MAXFLO Valves

Compact design giving you plenty of room to include a shut off valve in the same compartment as the float. Operates from 3 PSI to 175 PSI (570 litres per minute @ 29 PSI). Supplied with a 50-25mm reducing nipple.

THE GRAIN WALL

ON-FARM STORAGE

Store grain, fertiliser, gravel, or sand on your property with confidence. Constructed from 45MPa concrete reinforced with synthetic fibres and steel, the Conron Grain Wall is built to securely store whatever materials you require.



● Rolled edge for tarp protection

● Recessed area to lock grain tarp into place

● Tarps lock in place with RHS and our purpose-built brackets

● Supplied with built in ferrells to easily join grain walls together with our galvanised plates

Product Code: AG-GRAINWALL
Dimensions: 3000mm L x 700mm W x 1030mm H
Weight: 1240kg

CHAIN LIFTING KIT

FOR EASY INSTALLATION

- 4 leg 8mm Grade 8 adjustable chain sling, test certificate and tag.
- Effective length 3mt. Working load limit of 3.5t @ 60 degrees. **AS3775 compliant.**
- 4x 1.3t Swift Lift Mushroom Style Lifting Clutches. **AS3850 compliant.**

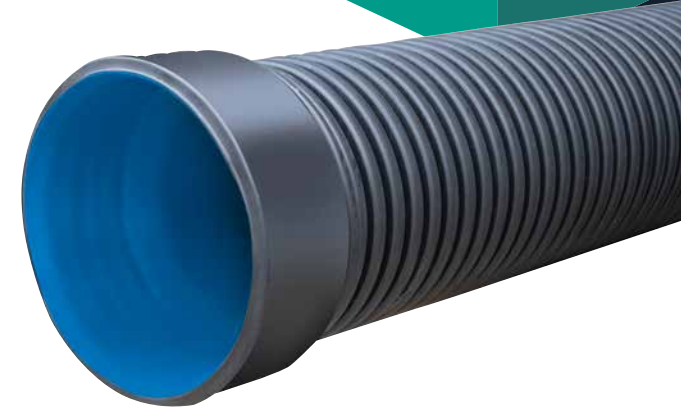




CONCRETE PIPE

Concrete Stormwater Pipes are manufactured to the highest quality in accordance with Australian Standards. Civilcast stock a range of common sizes, with most sizes and classes available upon request.

ITEM #:	DESCRIPTION:	WEIGHT (kg):
PIP375 RRJ4	Steel Reinforced Concrete RRJ Pipe 375mm x 2.34m Class 4	312
PIP450 RRJ4	Steel Reinforced Concrete RRJ Pipe 450mm x 2.34m Class 4	434
PIP525 RRJ4	Steel Reinforced Concrete RRJ Pipe 525mm x 2.34m Class 4	518
PIP600 RRJ4	Steel Reinforced Concrete RRJ Pipe 600mm x 2.34m Class 4	648
PIP675 RRJ4	Steel Reinforced Concrete RRJ Pipe 675mm x 2.34m Class 4	824
PIP750 RRJ4	Steel Reinforced Concrete RRJ Pipe 750mm x 2.34m Class 4	1034



HDPE POLYETHYLENE DRAINAGE PIPE

Polyethylene Drainage Pipe is lightweight, durable, and versatile. Made from high density polyethylene (HDPE), these pipes offer exceptional durability, corrosion resistance and flexibility, making them suitable for underground drainage systems in residential, commercial, agricultural and industrial settings.

ITEM #:	DESCRIPTION:
PIPATL110 6m	DN110 x 6.404m HD Polyethylene (HDPE) SN8 Stormwater Drainage Pipe, RRJ Corrugated Twin Walled Smooth Bore
PIPATL160 6m	DN160 x 6.370m HD Polyethylene (HDPE) SN8 Stormwater Drainage Pipe, RRJ Corrugated Twin Walled Smooth Bore
PIPATL225 6m	DN225 x 6.280m HD Polyethylene (HDPE) SN8 Stormwater Drainage Pipe, RRJ Corrugated Twin Walled Smooth Bore
PIPATL300 6m	DN300 x 6.183m HD Polyethylene (HDPE) SN8 Stormwater Drainage Pipe, RRJ Corrugated Twin Walled Smooth Bore
PIPATL375 6m	DN375 x 6.181m HD Polyethylene (HDPE) SN8 Stormwater Drainage Pipe, RRJ Corrugated Twin Walled Smooth Bore
PIPATL450 6m	DN450 x 6.121m HD Polyethylene (HDPE) SN8 Stormwater Drainage Pipe, RRJ Corrugated Twin Walled Smooth Bore
PIPATL525 6m	DN525 x 6.034m HD Polyethylene (HDPE) SN8 Stormwater Drainage Pipe, RRJ Corrugated Twin Walled Smooth Bore
PIPATL600 6m	DN600 x 5.900m HD Polyethylene (HDPE) SN8 Stormwater Drainage Pipe, RRJ Corrugated Twin Walled Smooth Bore
PIPATL600 SLT 6m	DN600 x 5.9m 'Slotted' HD Polyethylene (HDPE) SN8 Stormwater Drainage Pipe, RRJ Corrugated Twin Walled Smooth Bore Slotted
PIPATL750 6m	DN750 x 5.910m HD Polyethylene (HDPE) SN8 Stormwater Drainage Pipe, RRJ Corrugated Twin Walled Smooth Bore
PIPATL900 6m	DN900 x 5.972m HD Polyethylene (HDPE) SN8 Stormwater Drainage Pipe, RRJ Corrugated Twin Walled Smooth Bore
PIPATL1050 6m	DN1050 x 5.924m HD Polyethylene (HDPE) SN8 Stormwater Drainage Pipe, RRJ Corrugated Twin Walled Smooth Bore

HEADWALLS

Civilcast offer a range of standard headwalls to suit most stormwater pipes. Constructed in precast concrete for strength and durability, headwalls are the ideal solution for retaining earth around stormwater pipe outlets.



ITEM #:	DESCRIPTION:	EXPOSURE:	OVERALL HEIGHT:	OVERALL WIDTH:
HEPF090-150	Pipe Headwall, Single cell, precast concrete with cathedral KO full base to suit 90/150mm pipe - Extra Small (Fi reinforced)	B2	280	550
HEPF225-375	Pipe Headwall, Single cell, precast concrete with cathedral KO to suit 225/300/375/DN450mm pipe - Small (Fi reinforced)	B2	700	1575
HEPF450-600	Pipe "FR" headwall, Single cell, precast concrete with cathedral KO to suit DN450/DN525/DN600mm pipe - Medium and designed to AS3600	B2	1040	1670
HEPF675-750	Pipe Headwall, Single cell, precast concrete with cathedral KO to suit 675/750mm pipe - Large (Fi reinforced)	B2	1410	2020
HEPF825-900	Pipe Headwall, Single cell, precast concrete with cathedral KO to suit 825/900mm pipe - Extra Large (Fi reinforced)	B2	1410	2020
HEP1050	Pipe Headwall - Single cell, precast concrete to suit DN1050mm pipe and designed to AS3600	B1	1700	3220
HEP1200	Pipe Headwall - Single cell precast concrete to suit DN1200mm pipe with weep holes in wings and designed to AS3600	B1	1700	3220

BOX CULVERTS

Civilcast are precast box culvert specialists with our range including spans from 450mm right up to 3600mm. Our precast box culverts are a quick, cost-effective structural solution for a range of applications including; road crossings over waterways and flood prone areas, housing of underground services. Base slabs and link slabs are also available upon request.



Refer to the span table below for available size configurations:

HEIGHT (mm):	SPAN (mm):												
	300	450	600	900	1200	1500	1800	2100	2400	2700	3000	3300	3600
225	✓	✓	✓	✓	✓	✓	✓	✓	✓	✓	✓	✓	✓
300	✓	✓	✓	✓	✓	✓	✓	✓	✓	✓	✓	✓	✓
450		✓	✓	✓	✓	✓	✓	✓	✓	✓	✓	✓	✓
600			✓	✓	✓	✓	✓	✓	✓	✓	✓	✓	✓
750				✓	✓	✓	✓	✓	✓	✓	✓	✓	✓
900				✓	✓	✓	✓	✓	✓	✓	✓	✓	✓
1200					✓	✓	✓	✓	✓	✓	✓	✓	✓
1500						✓	✓	✓	✓	✓	✓	✓	✓
1800							✓	✓	✓	✓	✓	✓	✓
2100								✓	✓	✓	✓	✓	✓
2400									✓	✓	✓	✓	✓
2700										✓	✓	✓	✓
3000											✓	✓	✓
3300												✓	✓
3600													✓

* Leg thickness varies according to the height of the culvert. Drawings of required sizes are available upon request. Designed & Manufactured to AS1597. Where design requirements are outside of or greater than the parameters of AS1597, structural design and detailing to be provided by project engineer.
 ● Custom size manufactured upon request.

CONRON STOCKGRIDS

Conron specialises in providing a comprehensive range of durable and industry-leading stock grids, designed to meet the rigorous demands of agricultural and industrial applications. Our stock grids are engineered with robust materials and meticulous craftsmanship to ensure longevity and reliability in various environments.

Features

- Engineered for both Council roads and on-farm use.
- Heavy-duty construction with hot-dipped galvanisation.
- Manufactured in compliance with Australian Standard AS5100.2.
- Abutments made from 45MPa computer-batched concrete, reinforced with synthetic fibers and steel.
- Available in three axle sizes.
- Concrete abutments provide excellent resistance to the elements.
- Features removable heavy-duty cattle rail wings. (Optional)
- Our 20T stock grids are also offered with a 7-metre wide opening, providing optimal entry to your operation.
- Grid frame is easily removable for cleaning underneath the cattle grid.
- Open-ended design allows for water flow through the grid.
- Our Grids include cast-in Swift Lifts for effortless installation.

BUILT TO LAST
100% TRUCKPROOF
RELIABLE & PEACE OF MIND STOCK GRIDS

STOCKIE 8T

STRESS LESS WHEN SHUTTING THE FARM GATE

Have you ever driven off and been left wondering, "Did I shut the house yard gate?" Stress less with the Conron Stockie 8T!

Manufactured and designed to accommodate single axle groups, our 8T Grid will eliminate any worries about leaving the gate open and is the ideal solution for your operation. Our removable Heavy-Duty Wings are optional and sold separately.



Suitable for up to single axle group

Product Code: AG-CONSTOG3.5X8T
Dimensions: 3500mm L x 2250mm W x 500mm H
Weight: 2300kg

Product Code: AG-CONSTOG4X8T
Dimensions: 4000mm L x 2250mm W x 500mm H
Weight: 2650kg

BUILT TO LAST
100% TRUCKPROOF
RELIABLE & PEACE OF MIND STOCK GRIDS

STOCKIE 16T

DON'T BE LEFT BEHIND WHEN SHUTTING THE GATE

The Stockie 16T Grid is our most popular choice for on farm situations. Engineered to AS5100.2 for peace of mind, the Stockie 16T is manufactured from heavy-duty, hot-dipped galvanised steel. Suitable for tandem axle groups, it's built to last and deliver reliable livestock and farm management solutions. Our removable Heavy-Duty Wings are optional and sold separately.



 Suitable for up to tandem axle group

Product Code: AG-CONSTOG3.5X16T
Dimensions: 3500mm L x 2250mm W x 500mm H
Weight: 2400kg

Product Code: AG-CONSTOG4X16T
Dimensions: 4000mm L x 2250mm W x 500mm H
Weight: 2700kg

**[BUILT TO LAST
 100% TRUCKPROOF]**
 RELIABLE & PEACE OF MIND STOCK GRIDS

STOCKIE 20T

THE ULTIMATE HIGHWAY CONVENIENCE

Built to endure heavy traffic applications, our 20T Stockie is the largest in our cattle grid lineup. It is fully engineered and manufactured to meet AS5100.2, ensuring a robust design capable of handling a 20-tonne axle load rating and accommodating up to a Tri axle group. This grid is designed for durability and practicality, offering reliable livestock management solutions for demanding environments.



 Suitable for up to tri-axle group

Product Code: AG-CONSTOG3.5X20T
Dimensions: 3500mm L x 2250mm W x 500mm H
Weight: 2600kg

Product Code: AG-CONSTOG4X20T
Dimensions: 4000mm L x 2250mm W x 500mm H
Weight: 2950kg

Product Code: AG-CONSTOG7X20T
Dimensions: 7000mm L x 2250mm W x 500mm H
Weight: 5200kg

**[BUILT TO LAST
 100% TRUCKPROOF]**
 RELIABLE & PEACE OF MIND STOCK GRIDS



-  1300 084 698
-  conronstockcrete.com.au
-  sales@conron.com.au
-  1 Campbell Street,
Cowra NSW 2794

